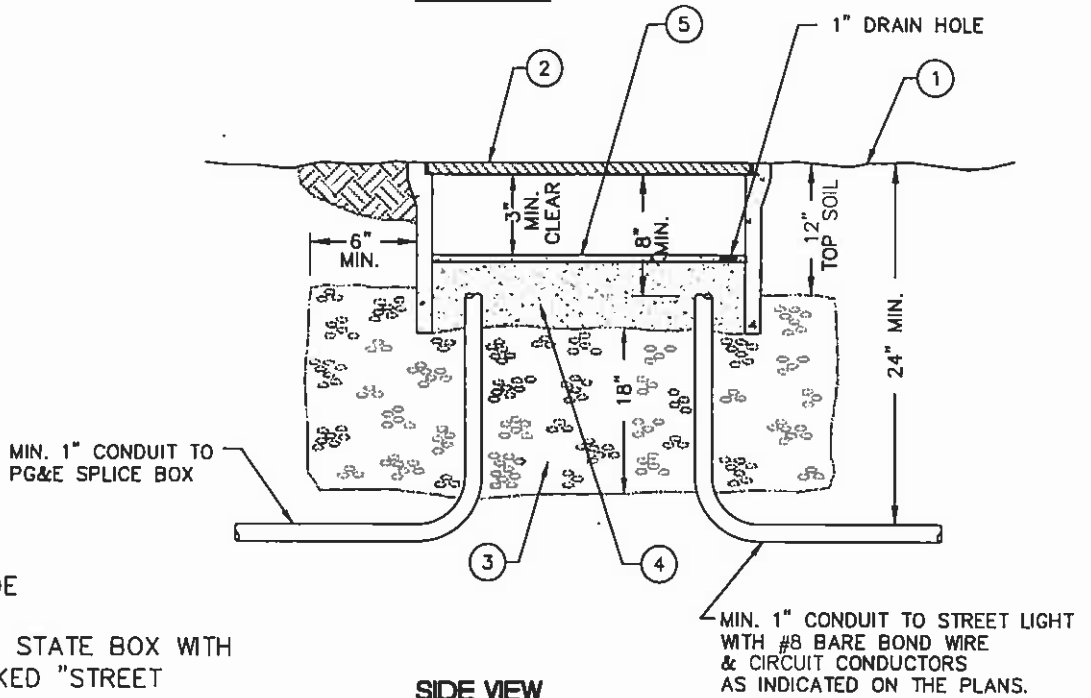


PLAN VIEW





SIDE VIEW

- ① FINISH GRADE
- ② MIN. #3 1/2 STATE BOX WITH COVER MARKED "STREET LIGHTS". (CHRISTY N-9 OR BROOKS 3 1/2).
- ③ PEA GRAVEL BACKFILL FOR DRAINAGE.
- ④ PLACE SAND BACKFILL TO COMPLETELY COVER CONDUITS AND CONDUCTORS.
- ⑤ 2" OF 2-SACK SLURRY.

NOTES:

- A. INSTALL CONDUIT AND CONDUCTORS TO PG&E SECONDARY SPLICE BOX. PG&E WILL PROVIDE CONNECTION WITHIN SPLICE BOX.
- B. INSTALL DUCT SEAL IN CONDUIT ENDS.
- C. THE STREET LIGHT CABLE MUST COME UP INTO THE SAME END OF THE BOX AS ALL OF THE OTHER CABLES.

THE CITY OF WEST SACRAMENTO – STANDARD DETAIL

APPROVED BY:  CITY ENGINEER	C-38733 P.E. NO.	3/31/05 DATE	TITLE: STREET LIGHT SERVICE POINT STANDARD DETAIL #: 601	
REVISION:				
REVISION:				
REVISION:				
REVISION:				